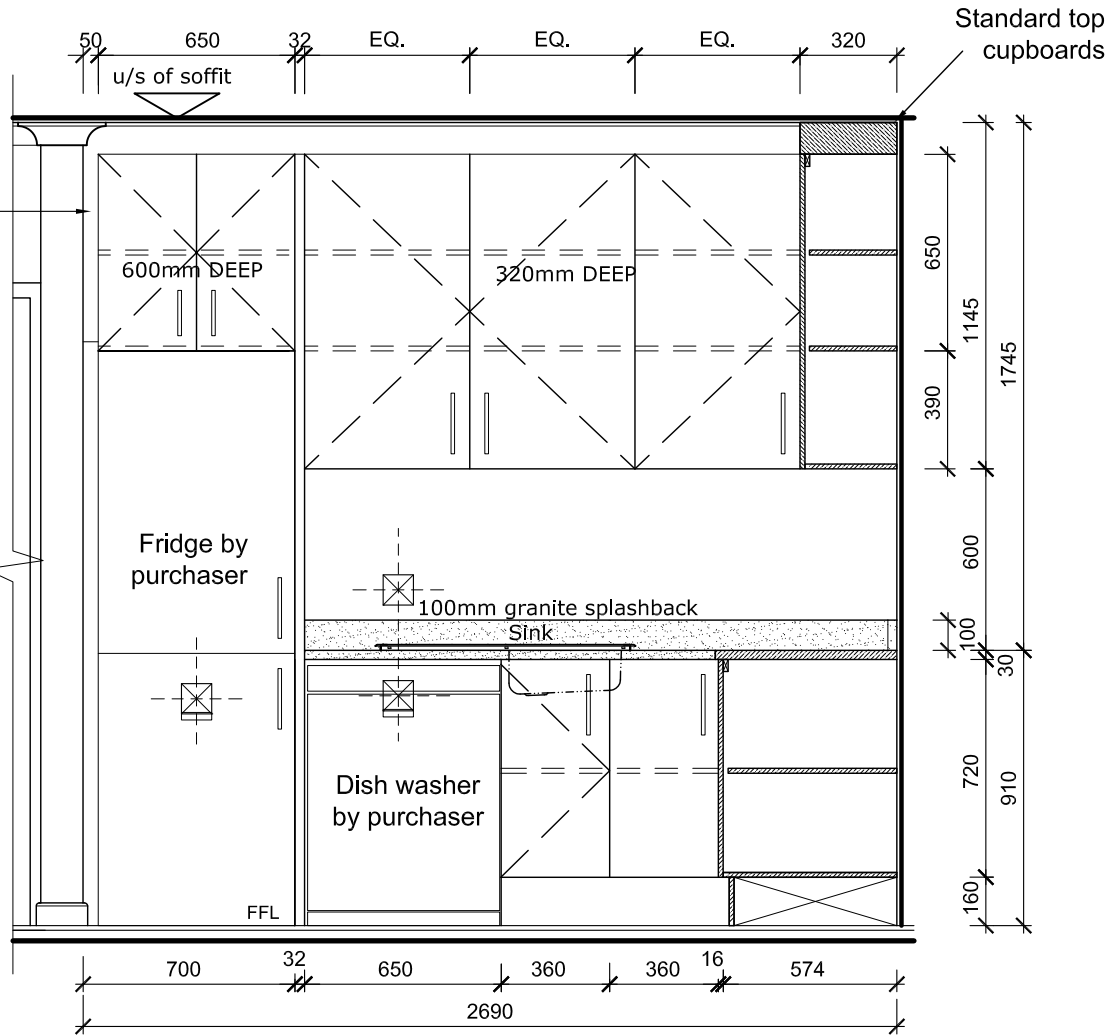


50mm Side filler,
set back 20mm
from carcass face



ELEVATION B-B

CUPBOARDS FINISH:

- Tops - 30mm Rustenburg Granite with 100mm Granite splash back
- Doors/Drawers - 16mm chipboard with Woodtex Balsa finish and 2mm impact edging , colour to match doors / drawers
- Handles - Roco 200mm stainless steel bar handle or similar approved
- Shelves - 16mm white Melamine finished chipboard with 0.3mm PVC edging
- Carcass - 16mm chipboard white Melamine finished with 0.3mm PVC edging inside, Woodtex Balsa externally with 2mm Impact edging to exposed sides.
- Skirting - 16mm chipboard with Woodtex Balsa finish.
- Hinges - Ferrari Metal hinges



B.O.U.W.E.R
ARCHITECTS

Tel: 021 914 3301 Fax: 086 670 7730
PO Box 4801 O Tyger Valley O 7536

info@bouwerarchitects.co.za

NOTES
FOR INFORMATION

PROJECT PANORAMA PALMS, Erf 18011, PANORAMA		
DRAWING TYPICAL ONE BEDROOM UNIT KITCHEN ELEVATION BB		
SCALE 1:25	PROJECT NO. 09-02-108	DWG. NO. WD04_2003
DATE 2010-06-04	DRAWN MD	REV 0